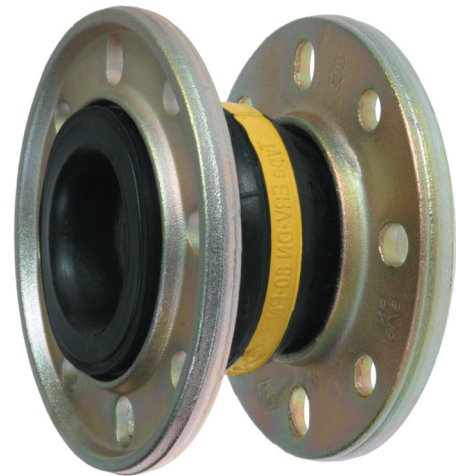


Section 1	Weight App. ≈ kg	Effect. Area Q:cm ²	Bellow Size DN		Press. Nom. bar	Flange ¹⁾ Measurements mm			Length BL mm	Part ¹⁾ Number Type
			in.	mm		D	k Ø	l x Ø		
	1,9	15	1"	25	16	115	85	4 x 14	130	ERV-G 25.16 ²⁾
	3,4	15	1 1/4"	32	16	140	100	4 x 18	130	ERV-G 32.16
	3,6	15	1 1/4"	32	16	140	100	4 x 18	160	ERV-G 32x160.16
	4,0	20	1 1/2"	40	16	150	110	4 x 18	130	ERV-G 40.16
	4,2	20	1 1/2"	40	16	150	110	4 x 18	160	ERV-G 40x160.16
	4,6	30	2"	50	16	165	125	4 x 18	130	ERV-G 50.16
	4,7	30	2"	50	16	165	125	4 x 18	150	ERV-G 50x150.16
	4,8	30	2"	50	16	165	125	4 x 18	160	ERV-G 50x160.16
	5,3	50	2 1/2"	65	16	185	145	4 x 18	130	ERV-G 65.16
	5,4	50	2 1/2"	65	16	185	145	4 x 18	150	ERV-G 65x150.16
	5,5	50	2 1/2"	65	16	185	145	4 x 18	160	ERV-G 65x160.16
	6,9	85	3"	80	16	200	160	8 x 18	130	ERV-G 80.16
	7,0	85	3"	80	16	200	160	8 x 18	150	ERV-G 80x150.16
	7,1	85	3"	80	16	200	160	8 x 18	160	ERV-G 80x160.16
	8,0	125	4"	100	16	220	180	8 x 18	130	ERV-G 100.16
	8,1	125	4"	100	16	220	180	8 x 18	150	ERV-G 100x150.16
	8,2	125	4"	100	16	220	180	8 x 18	160	ERV-G 100x160.10
	9,9	185	5"	125	16	250	210	8 x 18	130	ERV-G 125.16
	10,1	185	5"	125	16	250	210	8 x 18	150	ERV-G 125x150.16
	10,2	185	5"	125	16	250	210	8 x 18	160	ERV-G 125x160.16
	12,3	250	6"	150	16	285	240	8 x 22	130	ERV-G 150.16
	12,4	250	6"	150	16	285	240	8 x 22	150	ERV-G 150x150.16
	12,5	250	6"	150	16	285	240	8 x 22	160	ERV-G 150x160.16
	16,5	400	8"	200	16	340	295	8 x 22	130	ERV-G 200.10
	16,6	400	8"	200	16	340	295	8 x 22	150	ERV-G 200x150.10
	16,7	400	8"	200	16	340	295	8 x 22	160	ERV-G 200x160.10
	16,8	400	8"	200	16	340	295	8 x 22	175	ERV-G 200x175.10
	21,6	600	10"	250	16	395	350	12 x 22	130	ERV-G 250.10
	21,9	600	10"	250	16	395	350	12 x 22	175	ERV-G 250x175.10
	22,1	600	10"	250	10	395	350	12 x 22	200	ERV-G 250x200.10
	29,3	800	12"	300	16	445	400	12 x 2	130	ERV-G 300.10
	29,8	800	12"	300	10	445	400	12 x 2	200	ERV-G 300x200.10
	43,0	1000	14"	350	16	505	460	16 x 22	200	ERV-G 350.10
	46,0	1375	16"	400	16	565	515	16 x 26	200	ERV-G 400.10
	50,0	1780	18"	450	10	615	565	20 x 26	200	ERV-G 450.10
	53,0	1780	18"	450	10	615	565	20 x 26	250	ERV-G 450x250.10
	57,0	2185	20"	500	10	670	620	20 x 26	200	ERV-G 500.10
	70,0	3080	24"	600	10	780	725	20 x 30	200	ERV-G 600.10
	117,0	4800	28"	700	10	895	840	24 x 30	275	ERV-G 700.10
	129,5	5440	32"	800	10	1015	950	24 x 33	250	ERV-G 800.10
	184,0	7100	36"	900	10	1115	1050	28 x 33	300	ERV-G 900.10
	245,0	8700	40"	1000	10	1230	1160	28 x 36	300	ERV-G 1000.10

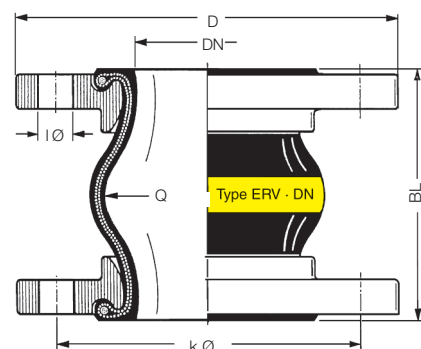
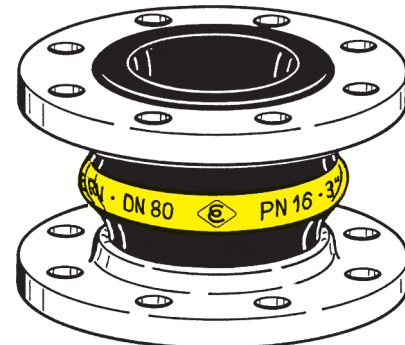


Type ERV-G



YELLOW BAND expansion joints in High-Tech design suitable for petroleum based products, fuel ethanol blend e.g. E 85 and DIN EN fuels up to 50% aromatic content, also town gas and natural gas, except for LP gas. Temperature (depending on medium) range -20°C up to +90°C, temporarily up to +100°C. Electrically conductive.

- Lining : NBR (nitrile), seamless, abrasion resistant
- Reinforcement : PA textile cord
- Cover : Chloroprene CR
- Marking : Yellow band, ERV DN..., PN ..., production date
- Flanges ¹⁾ : Swivelling, DIN PN



1) Examples. Other flange standards and materials see catalogue pages 1-101 to 1-104.


2) For rubber expansion joints DN 25 bellows DN 32 are used.

RUBBER EXPANSION JOINTS ERV-G

Specifications subject to change without notice · Copyright ELAFLEX

RANGE OF MOVEMENT TYPE ERV-G

Allowable static range of movement in service with usage of collar flanges up to 50° C

ERV-G		Installation Length		axial		lateral	angular
Length BL [mm]	Bellow Size DN [mm]	EL min. [mm]	EL max. [mm]	L min. [mm]	L max. [mm]	I [mm]	
130	25 - 80	120	135	100	150	± 30	± 30
130	100 - 150	120	135	100	150	± 30	± 20
130	200	115	140	105	160	± 30	± 10
130	250 - 300	125	140	120	160	± 15	± 5
150	50 - 200	140	160	115	180	± 30	± 15
160	32 - 200	150	170	130	195	± 35	± 15
175	200 - 250	165	185	160	210	± 10	± 5
200	250 - 300	190	210	160	235	± 30	± 10
200	350 - 600	190	210	160	235	± 30	± 8
250	450	240	260	210	285	± 35	± 10
250	800	240	260	210	285	± 35	± 5
260	700	250	270	220	290	± 30	± 5
300	900 - 1000	290	310	260	340	± 40	± 5

Permissible Vacuum [mbar]

DN	32	40	50	65	80	100	125	150	200	250	300	350	400	450	500	600	700	800	900	1000
without VSD / VSR	max.	max.	max.	-700	-600	-400	-300	-300	-300	-200	-100									
with VSD			max.	max.	max.	max.	max.	max.	-600	-400	-200									
with VSR							max.	max.	max.	max.	max.	max.	max.	-700	-700	-700				
with VSRV														max.	max.	max.	max.	-700	-700	-700

Data measured at room temperature with new expansion joints of standard length and non swelling media. For swelling media use a safety factor. A compressed installation improves the table listed vacuum resistance. The maximum permissible elongation (L max.) reduces the vacuum resistance by 50%. In this case we recommend using vacuum support spirals or vacuum support rings (see catalogue page 1-106).

Dependencies of overpressure, range of movement and temperature please see table on catalogue page 1-6.

Approvals

These certificates for type ERV-G can be downloaded from www.flexej.co.uk



Overview of all certificates on catalogue page 1-2